



# SLEAPKOSH

**AIRSHOW / 11-13 JULY \ FLY IN**

## **VISITING PILOTS BRIEF**

**VERSION 1**

**UPDATED FEBRUARY 25**

Thank you for booking into Sleapkosh 2025. The Shropshire Aero Club was formed in 1955 and we're proud and delighted to welcome you to Sleap to help us celebrate our 70th birthday.

We are expecting great support for Sleapkosh 2025, so whether you're coming to watch the airshow, admire the aircraft or just socialise please read and follow these joining instructions carefully so that everyone can enjoy a fun and safe weekend.

DETAILS	FRIDAY 11 <sup>TH</sup>	SATURDAY 12 <sup>TH</sup>	SUNDAY 13 <sup>TH</sup>
AIRSHOW START	20:30	18:00	N/A
AIRSHOW END	21:45	20:30	N/A
PARACHUTE DROP	21:30	TBC	N/A
A/G OPEN	10:00	08:30	08:30
A/G CLOSE	22:00	22:00	16:30
EVENT START	10:00	08:30	08:30
EVENT END	23:30	23:30	15:30
BEER	ALLDAY	ALLDAY	ALLDAY

**COSTS:** Landing Fee: £60 (Weekend Pay on Day) / £30 (Day Only) / £45 Early Bird Landing Fee. This price covers all three days in one fee to cover parking, camping, live music and airshow.

**TIMINGS:** The following flying procedures will apply during daylight hours Friday 11<sup>th</sup>, Saturday 12<sup>th</sup> and Sunday 13<sup>th</sup> July 2025. Visiting and home-based aircraft may join and depart during this period, except during the evening airshows. There will be no circuit or training flying over the weekend. RAF Shawbury helicopters operating to the west of Sleap on Friday will remain 1000' QNH and below. Keep a good lookout at all times, especially around the VRPs.

**ARRIVALS:** All joins should be made via the VRPs at **Montford Bridge** disused airfield or **Ellesmere Lake**.

The RAF airfields at Shawbury and Ternhill will be active on Friday 11<sup>th</sup> until 5pm. Pilots are advised to remain clear of the MATZs to reduce controller workload, though Zone and LARS services will be available from Shawbury on 133.155 if required. The parachuting site at Tilstock is likely to be active on Friday and Saturday and should be avoided.

**RUNWAYS:** All arrivals and departures will be to either runway 23 or 05. (18/36 will be used for day visitor parking). The circuit will be **23 RH, 05 LH** at 1000' QFE. There are grass and hard runways on 23/05. Both are available depending on pilot preference. However, they are deemed to be one runway and must not be used simultaneously. Check your VFR guide for airfield layout.

**RADIO:** Expect the Sleap frequency to be very busy, so restrict your RT calls to essential information only, as specified in the notes below. The Sleap AG operator will transmit the airfield details at regular intervals so listen out for this information before reaching the VRP. Do **not** request joining instructions.

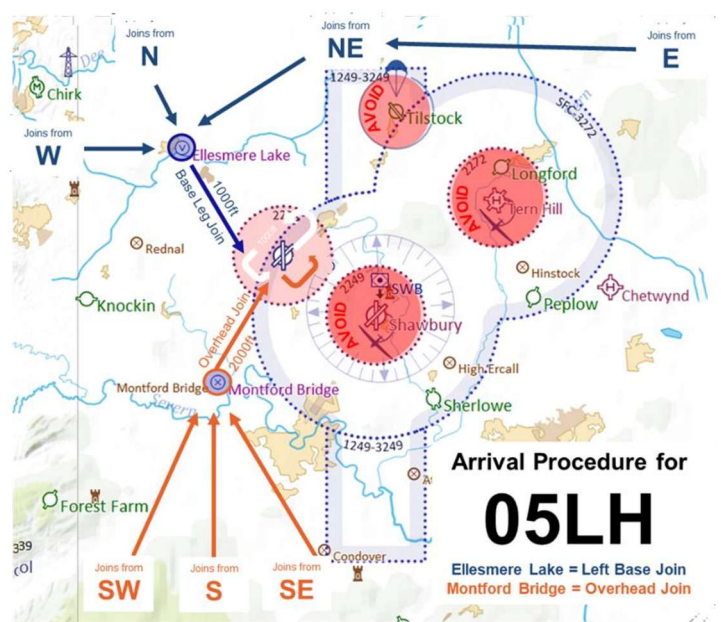
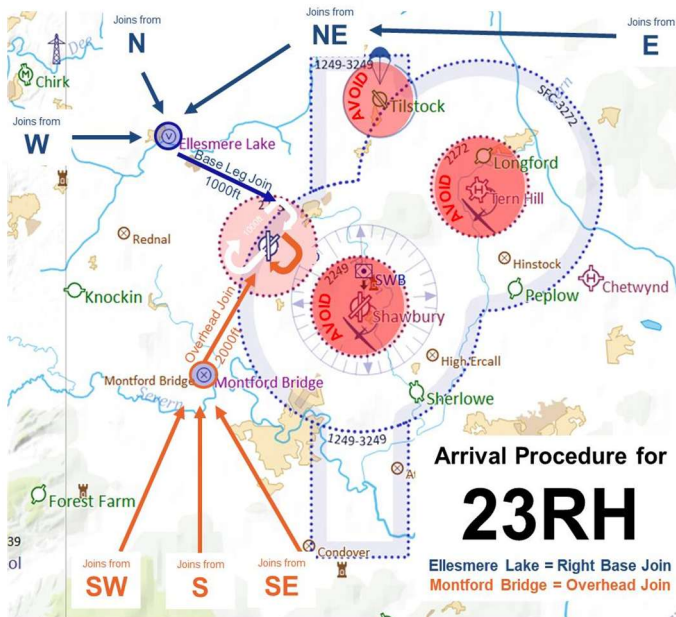
#### **JOINING FROM THE SOUTH:**

Join via **Montford Bridge**. Listen out for Sleap airfield details on Sleap Radio **122.455**. At the VRP make a single radio call giving callsign, type and position. Eg **G-ABCD, RV6, Montford Bridge**. Leave the VRP at **2000'** on Sleap QFE and route direct to the airfield overhead. Carry out a standard overhead join, descending to 1000' circuit height. Call eg **G-ABCD Downwind**. Fit in with other joining traffic and watch out for aircraft joining on base leg at 1000' from Ellesmere Lake VRP. Call **Final Hard** or **Final Grass**.

#### **JOINING FROM THE NORTH:**

Join via **Ellesmere Lake**. Listen out for Sleap airfield details on Sleap Radio **122.455** prior to reaching Ellesmere Lake. At the VRP make a single radio call giving callsign, type and position. Eg **G-ABCD, RV6, Ellesmere Lake**. Leave the VRP at **1000'** on Sleap QFE and route direct to base leg. Fit in with other joining traffic and watch out for aircraft downwind. Call **Final Hard** or **Final Grass**.

**IF IT GETS TOO BUSY OR EITHER RUNWAY IS OCCUPIED:** Go around, join the circuit or clear to the west and rejoin via one of the VRPs when things quieten down.



#### AFTER LANDING:

- **Runway 05.** Turn right at the intersection onto runway 18. If you need 05 full runway length, exit right at the end via Alpha and taxi to the grass apron, taking care around the fuel bay.
- **Runway 23.** After landing if possible turn left at the intersection down runway 18 for parking. If you need a bit more runway a short backtrack is fine. If you need all of 23, continue right to the end, exit at Foxtrot, and follow the southern taxiway to parking.

**PARKING:** Show the marshallers either a **C** or **P** in the window to indicate whether you are day parking or camping. (Print these off at the end of these instructions)

- **Day Parking** will be either side of Runway 18. Follow the marshaller instructions and push back to keep the middle of the runway clear. Walk to the tower via the marked path around the edge of the grass apron.
- **Camping** will be marshalled onto the grass apron for parking. Follow the marshaller and push back to be close to the aircraft next to you. Keep all tents clear of taxiways and stay safe while airside. Pilots are responsible for themselves and their passengers at all times. Walk to the tower via the marked path around the edge of the grass apron. When you leave, please take home all your belongings and rubbish.

When taxiing watch out for pedestrians, vehicles, other aircraft. Space will be limited. As soon as possible, shut down and manoeuvre your aircraft into the parking spot by hand. If you require fuel, let the office know. There will be an Avgas 100LL fuel bowser travelling around the site. Helicopters will be parked on the disused runway or at Heli East. Avgas 100LL and Jet-A1 F34 can be brought to you via bowser.



Once parked, walk to the 'C' to pay for your landing fees and buy a T-Shirt. You will be given a wrist band, please keep this on for the event.

- Give way to aircraft with engines running.
- When walking on aprons use the designated, marked pedestrian crossings.
- During the airshow please adhere strictly to the crowd line which is inside the black fence by the tower and follow all marshallers instructions – you must NOT be in the aircraft parking area during the shows, otherwise the display cannot go ahead.
- Toilets and showers are available 24hrs, please refer to the map.
- The live music set list, airshow acts and information are available in the office or on the website.
- First aid and assistance can be found at the yellow C in reception. Our team will be happy to help.
- There is no road access to the event. Guest passes and member passes to gain access to the event can be found in reception or by contacting us on [info@shropshireaeroclub.co.uk](mailto:info@shropshireaeroclub.co.uk)
- **Emergency Number: +44 (0) 1939 232882 (option 6 is 24hrs)**
- **Have a fun and share your pictures with us at #SleepKosh25 and @shropshireaeroclub**

**DEPARTURE PROCEDURES:** Do **not** call for airfield information. Airfield details will be broadcast regularly, listen out for the runway in use, pressure settings and other relevant information and taxi accordingly. Conduct power checks in a safe location.

- **Runway 05**, taxi to Hold F via Runway 18 and the southern taxiway. Do not enter the runway until it is safe to do so. Call lining up and taking off. Eg **G-ABCD lining up/ taking off runway 05.**
- **Runway 23**, taxi to the intersection via 36 and if suitable take off from that position. (This gives you 500m). If you need the full runway length taxi to Hold A via runway 36 and taxiways B and A. Do not enter the runway unless you know it is safe to do so. Call lining up and taking off. Eg **G-ABCD lining up/ taking off runway 23.**

Depart the Sleep ATZ via downwind or straight-out, avoiding the Shawbury and Ternhill ATZ, and Montford Bridge and Ellesmere Lake VRPs. If departing on Friday, remain outside the Shawbury MATZ unless in contact with them on 133.155mhz. **Keep a good eye out for traffic and expect the local area to be busy!**

**C**

**P**

**SEE YOU THERE!**

**#SLEAPKOSH25**